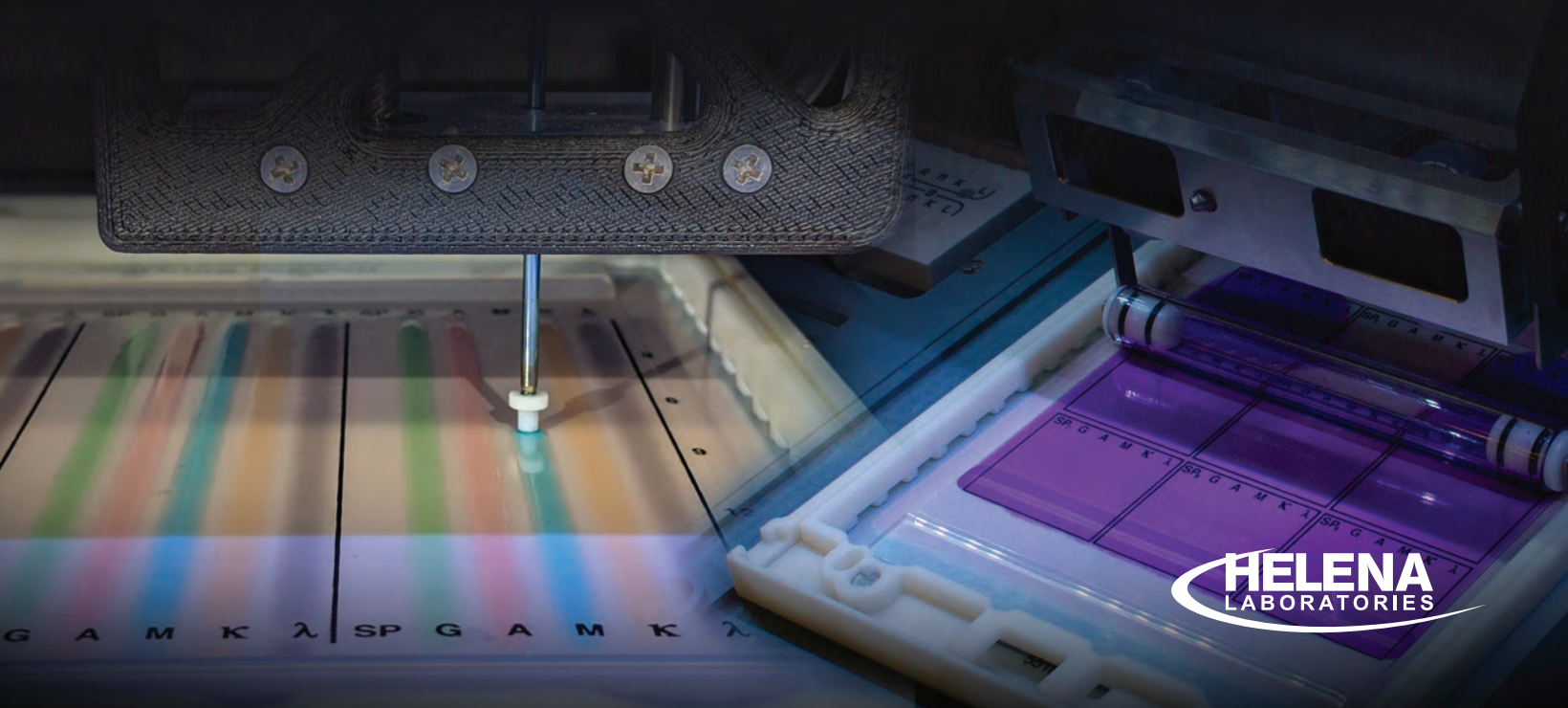
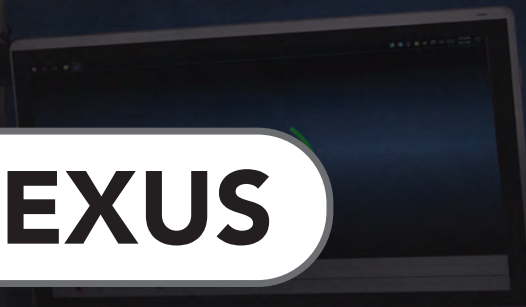
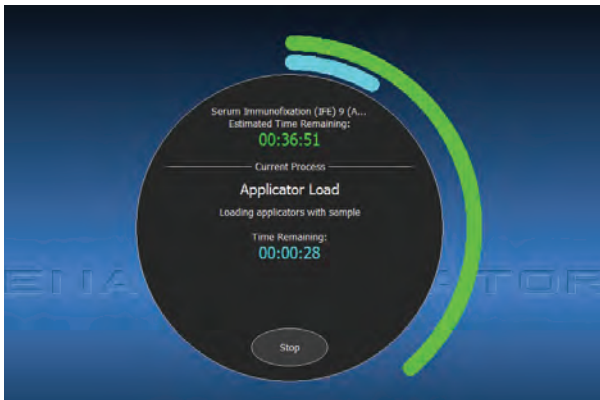


SPIFE NEXUS



SPIFE

NEXUS



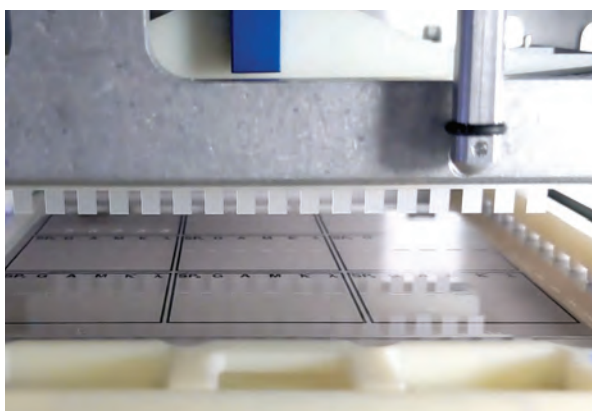
FULL AUTOMATION

- Load reagents and samples and walk away
- All gel processing and scanning are automated
- Visual status updates for monitoring at a glance



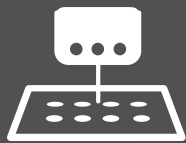
USER-FRIENDLY WITH ERROR CHECKING

- Ready Run Tray for easy, five-minute benchtop setup
- Assay specific QR codes with system check to prevent operator errors in setup
- Intuitive and flexible software interface



AUTO SAMPLING AND ELECTROPHORESIS

- Automatic application of samples to gels from primary tubes
- Auto dilutions for immunofixation
- Application system unaffected by triglycerides or large proteins



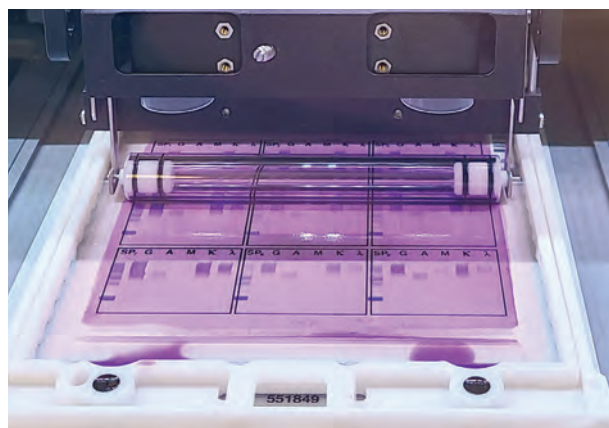
The New **SPIFE Nexus** is transformative technology for gel electrophoresis. We've taken the expertise gleaned from sixty years in the field, added five years of intentional engineering, and created a solidly reliable system that advances automation and ease of use.

Based on our full-sized SPIFE agarose gel platform, SPIFE Nexus reimagines all processing steps from sample handling to final results, with linking to capillary results as well.



REVOLUTIONARY ANTISERA APPLICATION SYSTEM

- Automated antisera for up to 15 profiles per gel application
- No crossover contamination or antisera templates
- Ready-to-use, color-coded antisera in temperature controlled on-board storage



READY-TO-USE STAINS

- Liquid stain, ready to be aliquoted and rolled on
- Micro volumes reduce waste and increase efficiency
- Clear Wash provides clear background for easy interpretation




INTEGRATED REPORTING

- QuickScan Touch Plus on-board with linking to other Helena gel and V8 Nexus CE data
- Myeloma Module provides linking to historic data for rapid review and reporting
- Composite Key Identifier feature creates a unique identifier from two demographic fields for tracking outside samples.

STEP 1

Load Reagents and
up to 100 Samples



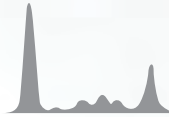
STEP 2

Hit Start and
Walk Away



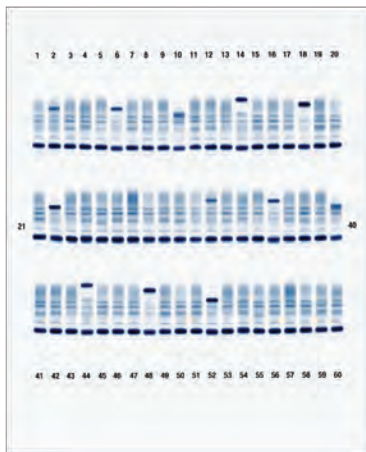
STEP 3

Auto Scanning –
Ready to Review



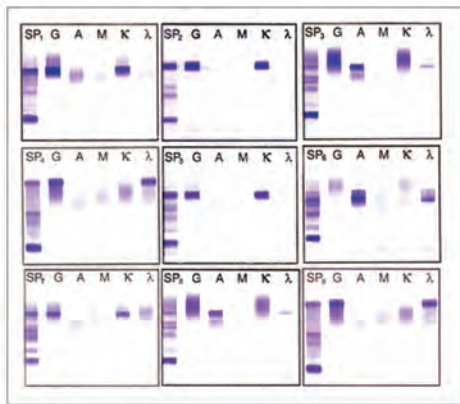
Optimize efficiency with the **READY RUN KIT** to set up the next run while processing the first.

SPIFE NEXUS **FULL AUTOMATION**



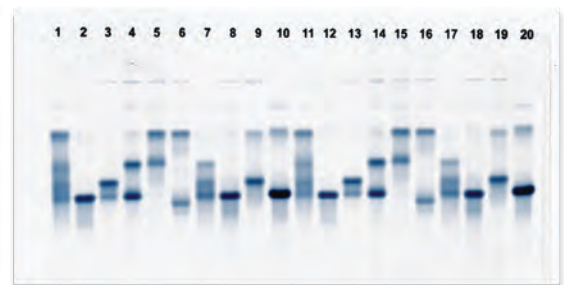
SPIFE Split-Beta Proteins

- 2422 SPIFE Nexus Split Beta SPE-20 Kit
- 2421 SPIFE Nexus Split Beta SPE-40 Kit
- 2420 SPIFE Nexus Split Beta SPE-60 Kit
- 2399 SPIFE Nexus Split Beta SPE-80 Kit
- 2398 SPIFE Nexus Split Beta SPE-100 Kit

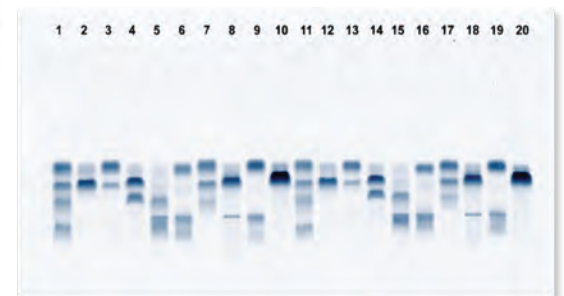


SPIFE ImmunoFix

- 2401 SPIFE Nexus IFE-6 Kit
- 2409 SPIFE Nexus IFE-9 Kit
- 2408 SPIFE Nexus IFE-15 Kit



Alkaline Hemoglobin



Acid Hemoglobin

SPIFE Hemoglobins

- 2415 SPIFE Nexus Alkaline Hb-20 Kit
- 2418 SPIFE Nexus Acid Hb-20 Kit

FUTURE TESTS

- Cholesterol - HDL, LDL, VLDL, Lp(a)-c
- CK and LD Isoenzymes
- ALP Isoenzymes

Specifications

SPIFE Nexus Dimensions:
41" (104.1 cm) H x 31" (78.8 cm) W x 29" (53.3 cm) D
Monitor and Keyboard:
23" (58.4 cm) H x 14" (35.6 cm) W x 16" (40.6 cm) D
Total Weight: ~250 lbs (113.4 kg)
Environment: 15° to 27° C (59° to 80.6° F)
Operating System: Microsoft® Windows® 10
**Windows is a registered trademark of Microsoft Inc.*
Input Power:
100 to 120 VAC at 16 Amps Max/
200 to 264 at 10 Amps Max

Electrophoresis Timer Range:
1 sec. to 20 min. in 1 second increments
@ 1100V and 150mA
Chamber Temperature Range:
10° to 32° C
Pre-Drying Temperature Range:
30° to 62° C
Final Drying Temperature Range:
30° to 65° C
Test Tubes:
12-16 mm diameter, 75-100 mm height



www.helena.com | helena@helena.com

800-231-5663