

**INTENDED USE**

SPIFE ImmunoFix is intended for the qualitative identification of monoclonal gammopathies in serum or urine using protein electrophoresis and immunofixation on the SPIFE, the SPIFE 2000 or SPIFE 3000 systems.

Cat. No. 3401, 3406, 3409 - Blade Assembly Application

Cat. No. 3401T, 3406T, 3409T - Template Application

**SUMMARY**

Immunofixation electrophoresis (IFE) is a two stage procedure using agarose gel high resolution electrophoresis in the first stage and immunoprecipitation in the second. There are numerous applications for IFE in research, forensic medicine, genetic studies and clinical laboratory procedures. The greatest demand for IFE is in the clinical laboratory where it is primarily used for the detection of monoclonal gammopathies. A monoclonal gammopathy is a primary disease state in which a single clone of plasma cells produces elevated levels of an immunoglobulin of a single class and type. Such immunoglobulins are referred to as monoclonal proteins, M-proteins, or paraproteins. Their presence may be of a benign nature or of uncertain significance. In some cases they are indicative of a malignancy such as multiple myeloma or Waldenstrom's macroglobulinemia. Differentiation must be made between polyclonal and monoclonal gammopathies because polyclonal gammopathies are only a secondary disease state due to clinical disorders such as chronic liver diseases, collagen disorders, rheumatoid arthritis and chronic infections.

Alfonso first described immunofixation in the literature in 1964.<sup>1</sup> Alper and Johnson published a more practical procedure in 1969 as a result of their work devoted to the detection of genetic polymorphisms of ceruloplasmin and Gc-globulin and the conversion of C3 during activation.<sup>2</sup> They later extended their studies to genetic polymorphisms of complement components and the identification of alpha<sub>1</sub> antitrypsin.<sup>3,4</sup> Immunofixation has been used as a procedure for the study of immunoglobulins since 1976.<sup>5,6</sup> The SPIFE IFE methods offer many advantages. These include ease of interpretation, excellent resolution, reagent conservation, and rapid turnaround.

In addition, the SPIFE IFE method offers a larger sample surface area (enabling up to nine specimens to be run at the same time), and shortened electrophoresis time.

**PRINCIPLE**

Proteins are first resolved by electrophoresis. In the second stage, the soluble antigen and antibody are allowed to react. The resultant antigen-antibody complex(es) may become insoluble (as long as the antibody is in slight excess or near equivalency) and precipitate. The precipitation rate depends on the proportions of the reactants, temperature, salt concentration and the pH of the solution. The unreacted proteins are removed by a washing step and the antigen-antibody complex (which might be visible as a white cloudy band in the unstained gel against a dark background) is visualized by staining. The bands in the protein separation are compared with the precipitin bands obtained with immunofixation.

**REAGENTS****1. SPIFE IFE 3/6/9 Gel**

**Ingredients:** Each gel contains agarose in tris-barbital/MOPS buffer with a stabilizer and a preservative.

**WARNING: FOR IN-VITRO DIAGNOSTIC USE ONLY. - TOXIC - CAUTION: DO NOT INGEST.** The gel contains barbital which, in sufficient quantity, can be toxic.

**Preparation for Use:** The gels are ready for use as packaged.

**Storage and Stability:** The gels should be stored horizontally at room temperature (15 to 30°C) and are stable until the expiration date indicated on the package. The gels must be stored in the protective packaging in which they are shipped. **DO NOT REFRIGERATE OR FREEZE.**

**Signs of Deterioration:** Any of the following conditions may indicate deterioration of the gel: (1) crystalline appearance indicating the agarose has been frozen, (2) cracking and peeling indicating drying of the agarose, (3) bacterial growth indicating contamination, (4) thinning of gel blocks.

**2. Acid Violet Stain**

**Ingredients:** The stain is comprised of Acid Violet stain.

**WARNING: FOR IN-VITRO DIAGNOSTIC USE ONLY. DO NOT INGEST.**

**Preparation for Use:** Dissolve the dry stain in 1 liter of 10% acetic acid and mix thoroughly. Fill the SPIFE stain vat.

**Storage and Stability:** The dry stain should be stored at 15 to 30°C and is stable until the expiration date indicated on the package. The stain solution is stable for six months when stored at 15 to 30°C in a closed container.

**Signs of Deterioration:** The diluted stain should be a homogeneous mixture free of precipitate.

**3. Citric Acid Destain**

**Ingredients:** After dissolution, the destain contains 0.3% (w/v) citric acid.

**WARNING: FOR IN-VITRO DIAGNOSTIC USE. DO NOT INGEST - IRRITANT.**

**Preparation for Use:** Pour 11 L of deionized water into the Destain vat. Add the entire package of Destain. Mix well until completely dissolved.

**Storage and Stability:** Store the Destain at 15 to 30°C. It is stable until the expiration date on the package.

**Signs of Deterioration:** Discard if solution becomes cloudy.

**4. Tris-Buffered Saline**

**Ingredients:** The powder contains a Tris base with Tris HCl and sodium chloride.

**WARNING: FOR IN-VITRO DIAGNOSTIC USE.**

**Preparation for Use:** Dissolve the powder in 8 L of deionized water and mix thoroughly.

**Storage and Stability:** Store the dry powder at 15 to 30°C until the expiration date indicated on the label. The buffer solution should be stored at 15 to 30°C.

**Signs of Deterioration:** The buffer solution should be discarded if it shows signs of bacterial contamination.

**5. SPIFE IFE Protein Fixative**

**Ingredients:** The fixative contains 2.5% sulfosalicylic acid, 1.0% trichloroacetic acid, and 0.25% glutaraldehyde.

**WARNING: FOR IN-VITRO DIAGNOSTIC USE. CORROSIVE - NEVER PIPETTE BY MOUTH. DO NOT INGEST.**

**Preparation for Use:** The fixative is ready for use as packaged.

**Storage and Stability:** The fixative should be stored at 2 to 8°C and is stable until the expiration date indicated on the vial.

**Signs of Deterioration:** The fixative should be a clear solution.

**6. Antisera to Human IgG, IgA, IgM, Kappa Light Chain and Lambda Light Chain**

**Ingredients:** Antisera vials in the kit contain monospecific antisera to human immunoglobulin heavy chains, IgG, IgM, IgA and to human light chains, Kappa and Lambda. The antisera have been prepared in goat. Each vial of antiserum contains a stabilizer and sodium azide as a preservative.

**WARNING: FOR IN-VITRO DIAGNOSTIC USE ONLY.**

To prevent the formation of toxic vapors, do not mix with acidic solutions. When discarding, always flush sink with copious amounts of water. This will prevent the formation of metallic azides which, when highly concentrated in metal plumbing, are potentially explosive. In addition to purging pipes with water, plumbing should occasionally be decontaminated with 10% NaOH.

**Preparation for Use:** The antisera are ready for use as packaged.

**Storage and Stability:** The antisera should be stored at 2 to 8°C and are stable until the expiration date indicated on the vial.

**Signs of Deterioration:** Extremely cloudy antisera may be indicative of bacterial contamination.

**INSTRUMENT**

A SPIFE®, SPIFE 2000, or SPIFE 3000 analyzer must be used to electrophorese, stain, destain, and then dry the gels. Refer to the Operator's Manual for detailed instructions.

**SPECIMEN COLLECTION AND HANDLING**

**Specimen:** Fresh serum or urine is the specimen of choice.

**Interfering Factors:**

1. Evaporation of uncovered specimens may cause inaccurate results.
2. Plasma should not be used because the fibrinogen may adhere to the gel matrix resulting in a band in all patterns across the gel.

**Storage and Stability:** Fresh serum or urine is the specimen of choice. If storage is necessary, samples may be stored covered at 2 to 8°C for up to 72 hours.

**PROCEDURE**

**Materials Provided:** The following materials are provided:

Sample Test Size	Cat. No.	Cat. No.
3 Sample	3406	3406T
6 Sample	3401	3401T
9 Sample	3409	3409T
SPIFE IFE Gels (10)	Fixative	1 vial
Acid Violet Stain (1 vial)	IgG	1 vial
Tris-Buffered Saline (1 pkg)	IgA	1 vial
Citric Acid Destain (1 pkg)	IgM	1 vial
SPIFE Blotter C (20)	Kappa	1 vial
SPIFE Blotter D (10)	Lambda	1 vial
Blotter Combs (30)		
Applicator Swabs (10)		
Applicator Blade Assembly (30)		
or		
SPIFE Urine IFE Templates (30)		
Blotter A-Plus (30)		

**Materials provided by Helena Laboratories but not contained in the kits above:**

	Cat. No.
SPIFE Analyzer	1109
SPIFE 2000 Analyzer	1130
SPIFE 3000 Analyzer	1088
IFE Controls	9400
REP Prep	3100
REP Auto Applicator	3710
SPIFE IFE 3/6 Disposable Cups	3368
SPIFE IFE 9/15 Disposable Cups	3363
SPIFE Disposable Cup Tray for IFE 3/6	3376
SPIFE Disposable Cup Tray for IFE 9	3367
SPIFE 2000/3000 Disposable Cup Tray for IFE 3/6	3377
SPIFE 2000/3000 Disposable Cup Tray for IFE 9	3378
Gel Block Remover	1115
SPIFE IFE Multi-Channel Pipettor	1122
Pipette Tips for SPIFE IFE Pipettor	3355
Tip Spacers for SPIFE IFE Pipettor	3356
Tip Spacers for SPIFE 3/6 Multi-Channel Pipettor	3349
Tip Spacers for SPIFE 9 Multi-Channel Pipettor	3396
Pipettor Tips for IFE 3/6 Multi-Channel Pipettor	3402
Pipettor Tips for IFE 9 Multi-Channel Pipettor	3397
SPIFE IFE-6 Antisera Template	3410
SPIFE IFE-3 Antisera Template	3395
SPIFE IFE-9 Antisera Template	3392
SPIFE IFE 3/6 Antisera Tray	1119
SPIFE IFE 9 Antisera Tray	3394
SPIFE Urine IFE Alignment Guide	3380

**Materials and Supplies Needed but not Supplied:**

- 10% Glacial acetic acid
- 0.85% saline

**STEP-BY-STEP METHOD**

The SPIFE and SPIFE 2000/3000 analyzers share common instructions for this method except in Step I.B.2, and as noted below:

	SPIFE Section	SPIFE 2000/3000 Section
Sample Application	II	IV
Electrophoresis	III	V, VI

*Refer to the steps appropriate to your analyzer.*

**I. Sample Preparation (SPIFE/SPIFE 2000/3000)**

**NOTE:** Helena's recommendation for sample dilutions are given below. However, due to desired sensitivity variations, serum samples may also be diluted as follows:

- IgG = 1:5 to 1:10
- IgA = undiluted to 1:5
- IgM = undiluted to 1:5
- κ = 1:5 to 1:10
- λ = undiluted to 1:5

The more concentrated samples are more likely to prozone while the more diluted samples may not exhibit desired sensitivity.

**A. Serum**

The patient serum samples are diluted 1:3 (1 part serum with 2 parts 0.85% saline) for serum protein lanes and diluted 1:5 (1 part serum with 4 parts 0.85% saline) for immunofix lanes.

**B. Urine**

Urine samples may be run diluted or unconcentrated. However, to achieve higher sensitivity, samples may be concentrated.

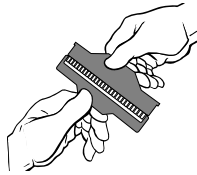
Shake samples to homogenize. Centrifuge desired volume at 2000 x g for 5 minutes. Remove supernatant and concentrate as follows:

Total Protein (mg/dL)	Conc. Factor
< 50	100x
50-100	50x

100-300  
300-600  
> 600

25x  
10x  
5x

1. Remove three disposable Applicator Blade Assemblies from the packaging. Remove the protective guard from the blades by gently bending the protective piece back and forth until it breaks free.
2. Place the three Applicator Blades into the numbered vertical slots in the Applicator Assembly as given below.



Instrument	Slots
SPIFE (serum only)	4,11,18
SPIFE 2000/3000 (serum or urine)	4,10,16

**Please note that the blade assembly will only fit into the slots in the Applicator Assembly one way; do not try to force the Applicator Blade into the slots.**

## II. Sample Application (SPIFE)

### A. Serum

1. Slide the Disposable Sample Cups into the appropriate Cup Tray. Pipette 17  $\mu$ L of diluted patient serum into the appropriate Sample Cups. [For 3 sample IFE gels, use the first set of wells on each row (PT1, PT3, PT5). Pipette the serum protein dilution into the first well in each row. Use the next five wells for the immunofix dilutions.]
2. Remove the gel from the protective packaging and discard overlay.
3. Dispense approximately 2 mL of REP Prep onto the left side of the electrophoresis chamber.
4. Place the left edge of the gel over the REP Prep aligning the round hole on the left pin of the chamber. Gently lay the gel down on the REP Prep, starting from the left side and ending on the right side, fitting the obround hole over the right pin. Use lint-free tissue to wipe around the edges of the plastic gel backing, especially next to electrode posts, to remove excess REP Prep. Make sure no bubbles remain under the gel.
5. Using a SPIFE Blotter C, gently blot the entire surface of the gel using slight fingertip pressure on the blotter. Remove the blotter.
6. Clean the electrodes with deionized water before and after each use. Wipe with a lint-free tissue.
7. Place a carbon electrode on the outside ledge of each gel block outside the magnetic posts. Close the chamber lid.
8. Press the **TEST SELECT/CONTINUE** buttons located on the Electrophoresis and Stainer sides of the instrument until the **SERUM IFE** option appears on the displays.

### B. Urine

1. Dispense approximately 2 mL of REP Prep onto the left side of the electrophoresis chamber.
2. Remove the gel from the protective packaging and discard overlay. Carefully place the gel on the SPIFE Urine IFE Alignment Guide. Using a SPIFE Blotter C, gently blot the entire surface of the gel using slight fingertip pressure on the blotter. Remove the blotter.
3. Place one Urine IFE Template on the gel aligning the application slits with the upper set of pins on

the sides of the Alignment Guide. The templates have been marked with a hole in one corner. Place the marked corner in the lower left position. Apply slight fingertip pressure to the template, making sure there are no air bubbles under it. Up to three templates can be placed on a gel at one time.

4. Carefully remove the gel from the guide, and place the left edge of the gel over the REP Prep aligning the round hole on the left pin of the chamber. Gently lay the gel down on the REP Prep, starting from the left side and ending on the right side, fitting the obround hole over the right pin. Use lint-free tissue to wipe around the edges of the plastic gel backing, especially next to the electrode posts, to remove excess REP Prep. Make sure no bubbles remain under the gel.
5. Clean the electrodes with deionized water before and after each use. Wipe with a lint free tissue.
6. Place a carbon electrode on the outside ledge of each gel block outside the magnetic posts. Close the chamber lid.
7. Press the **TEST SELECT/CONTINUE** buttons located on the Electrophoresis and Stainer sides of the instrument until the **URINE IFE** option appears on the displays.

## III. Electrophoresis (SPIFE)

Using the instructions provided in the Operator's Manual, set up parameters as follows:

### • Serum

#### Electrophoresis Unit

- |   |       |      |      |
|---|-------|------|------|
| 1) Load Sample                                | 00:30 | 21°C |      |
| Place applicator on sample tray (continue)    |       |      |      |
| 2) Apply Sample                               | 00:30 | 21°C |      |
| Place applicator on chamber (continue)        |       |      |      |
| 3) Electrophoresis                            | 6:30  | 21°C | 650V |
| Remove applicator, close lid, (continue)      |       |      |      |
| 4) Absorb                                     | 10:00 | 21°C |      |
| Remove gel blocks, apply antisera, (continue) |       |      |      |
| 5) Blot                                       | 2:00  | 21°C |      |
| Remove excess antisera, (continue)            |       |      |      |
| 6) Blot                                       | 5:00  | 40°C |      |
| Remove template, install blotter, (continue)  |       |      |      |
| 7) Dry  | 8:00  | 50°C |      |
| Remove blotter, (continue)                    |       |      |      |
| 8) End of Test                                |       |      |      |
| No Prompt                                     |       |      |      |

### • Urine

#### Electrophoresis Unit

- |   |       |      |      |
|---|-------|------|------|
| 1) Apply                                      | 5:00  | 21°C |      |
| Apply sample to template, (continue)          |       |      |      |
| 2) Electrophoresis                            | 6:30  | 21°C | 650V |
| Blot and remove template, (continue)          |       |      |      |
| 3) Absorb                                     | 10:00 | 21°C |      |
| Remove gel blocks, apply antisera, (continue) |       |      |      |
| 4) Blot                                       | 2:00  | 21°C |      |
| Remove excess antisera, (continue)            |       |      |      |
| 5) Blot                                       | 5:00  | 40°C |      |
| Remove template, install blotter, (continue)  |       |      |      |
| 6) Dry  | 8:00  | 50°C |      |
| Remove blotter, (continue)                    |       |      |      |
| 7) End of Test                                |       |      |      |
| No Prompt                                     |       |      |      |

### • Serum or Urine

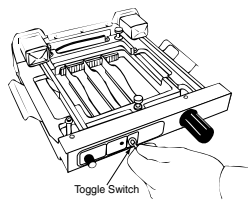
#### Stainer Unit

- |  |       |                |
|--|-------|----------------|
| 1) Wash                                    | 00:03 | Recirculate ON |
| Plate out, Gel holder in, Press (continue) |       |                |

- |   |       |                 |
|---|-------|-----------------|
| 2) Wash                                   | 10:00 | Recirculate ON  |
| Plate in, Gel holder in, Press (continue) |       |                 |
| 3) Stain                                  | 4:00  | Recirculate OFF |
| No Prompt                                 |       |                 |
| 4) Destain                                | 1:00  | Recirculate ON  |
| No Prompt                                 |       |                 |
| 5) Destain                                | 1:00  | Recirculate ON  |
| No Prompt                                 |       |                 |
| 6) Dry                                    | 8:00  | 63°C            |
| No Prompt                                 |       |                 |
| 7) Destain                                | 1:00  | Recirculate ON  |
| No Prompt                                 |       |                 |
| 8) Dry                                    | 5:00  | 63°C            |
| No Prompt                                 |       |                 |
| 9) End of Test                            |       |                 |
| No Prompt                                 |       |                 |

#### A. Serum

1. With **SERUM IFE** on the display, press the **START/STOP** button. An option to either begin the test or skip the operation will be presented. Press **START/STOP** to begin. Open the chamber lid.
2. Raise the Applicator Blades by flipping the toggle switch to the up position. Using the adjustment knob, set the Auto Applicator to speed 6.
3. Place the REP Auto Applicator Assembly onto the sample tray alignment pins. Lower the applicator tips down into the sample wells by flipping the toggle switch to the down position. Press **TEST SELECT/CONTINUE** to time sample loading.
4. After 30 seconds, lift the applicator tips out of the wells by flipping the toggle switch to the up position.
5. Carefully lift the entire Applicator Assembly away from the sample tray and immediately place onto the alignment pins located on the SPIFE electrophoresis chamber. Lower the Applicator Blades onto the gel by flipping the toggle switch to the down position.
6. Press the **TEST SELECT/CONTINUE** button for the electrophoresis chamber. Sample application will be timed for 30 seconds.
7. After sample application is complete, carefully lift the applicator blades by flipping the toggle switch to the up position.
8. Remove the Applicator Assembly from the electrophoresis chamber. Discard the Applicator Blades as biohazardous waste.
9. Close the chamber lid, and press the **TEST SELECT/CONTINUE** button to start electrophoresis. SPIFE will beep when electrophoresis is complete. Proceed to Section VII Immunofixation.



#### B. Urine

1. With **URINE IFE** on the display, press the **START/STOP** button. An option to either begin the test or skip the operation will be presented. Press **START/STOP** to begin. Open the chamber lid.
2. Place 3  $\mu$ L of each sample onto the slits in the template (one protein and five immunofixation) for each patient. Apply the samples as quickly as possible. (For IFE-3 gels, pipette the urine protein sample into the first slit in each template. Use the next five slits for the immunofix samples.)

3. Close the chamber lid, and press the **TEST SELECT/CONTINUE** button for the electrophoresis chamber. Sample application will be timed for 5 minutes.
4. After sample application is complete, open the chamber lid and gently blot the template with a Blotter A-Plus.
5. Carefully remove the blotter(s) and template(s) and discard as biohazardous waste.
6. Close the chamber lid, and press the **TEST SELECT/CONTINUE** button to start electrophoresis. SPIFE will beep when electrophoresis is complete. Proceed to Section VII Immunofixation.

### IV. Sample Application (SPIFE 2000/3000)

#### A. Serum or Urine Blade Application

1. Slide the Disposable Sample Cups into the appropriate Cup Tray. Pipette 17  $\mu$ L of diluted patient serum into the appropriate Sample Cups. [For 3 sample IFE gels, use the first set of wells on each row (PT1, PT3, PT5). Pipette the serum protein dilution into the first well in each row. Use the next five wells for the immunofix dilutions.]
2. Place the Cup Tray into the SPIFE 2000/3000. Align the holes in the tray with the pins on the instrument.
3. Dispense approximately 2 mL of REP Prep onto the left side of the electrophoresis chamber.
4. Remove the gel from the protective packaging and discard overlay.
5. Place the left edge of the gel over the REP Prep aligning the round hole on the left pin of the chamber. Gently lay the gel down on the REP Prep, starting from the left side and ending on the right side, fitting the obround hole over the right pin. Use lint-free tissue to wipe around the edges of the plastic gel backing, especially next to electrode posts, to remove excess REP Prep. Make sure no bubbles remain under the gel.
6. Using a SPIFE Blotter C, gently blot the entire surface of the gel using slight fingertip pressure on the blotter. Remove the blotter.
7. Clean the electrodes with deionized water before and after each use. Wipe with a lint-free tissue.
8. Place a carbon electrode on the outside ledge of each gel block outside the magnetic posts. Improper contact between the electrode and the gel block may cause skewed patterns. Close the chamber lid.
9. Press the **TEST SELECT/CONTINUE** buttons located on the Electrophoresis and Stainer sides of the instrument until the **SERUM IFE** or **URINE IFE** option appears on the displays.

#### B. Urine Template Application

1. Dispense approximately 2 mL of REP Prep onto the left side of the electrophoresis chamber.
2. Remove the gel from the protective packaging and discard overlay. Carefully place the gel on the SPIFE Urine IFE Alignment Guide. Using a SPIFE Blotter C gently blot the entire surface of the gel using slight fingertip pressure on the blotter. Remove the blotter.
3. Place one Urine IFE Template on the gel aligning the application slits with the upper set of pins on the sides of the Alignment Guide. The templates have been marked with a hole in one corner. Place

the marked corner in the lower left position. Apply slight fingertip pressure to the template, making sure there are no air bubbles under it. Up to three templates can be placed on a gel at one time.

4. Carefully remove the gel from the Guide, and place the left edge of the gel over the REP Prep aligning the round hole on the left pin of the chamber. Gently lay the gel down on the REP Prep, starting from the left side and ending on the right side, fitting the obround hole over the right pin. Use lint-free tissue to wipe around the edges of the plastic gel backing, especially next to the electrode posts, to remove excess REP Prep. Make sure no bubbles remain under the gel.
5. Clean the electrodes with deionized water before and after each use. Wipe with a lint-free tissue.
6. Place a carbon electrode on the outside ledge of each gel block outside the magnetic posts. Close the chamber lid.
7. Press the **TEST SELECT/CONTINUE** buttons located on the Electrophoresis and Stainer sides of the instrument until the **URINE IFE** option appears on the displays.

## V. Electrophoresis Parameters (SPIFE 2000/3000)

Due to variation in environmental conditions,

\* a Blot 1 time of 3 minutes is recommended, but a range of 2 to 5 minutes is acceptable.

\*\* an Electrophoresis time of 6:30 minutes is recommended, but a range of 6:00 to 7:00 minutes is acceptable.

Using the instructions provided in the Operator's Manual, set up parameters as follows:

### A. SPIFE 2000

#### • Serum (Blade Application)

##### Electrophoresis Unit

- 1) No prompt  
Load Sample 1    00:30    21°C    SPD.=6
- 2) No prompt  
Apply sample 1    00:30    21°C    SPD.=1
- 3) No prompt  
Electrophoresis 1    \*\*6:30    21°C    650V
- 4) Remove gel blks, apply antisera (continue)  
Absorb 1    10:00    21°C
- 5) Remove excess antisera (continue)  
Blot 1    \*3:00    21°C
- 6) Remove template, install blot (continue)  
Blot 2    5:00    40°C
- 7) Remove blotter, (continue)  
Dry 1    8:00    50°C
- 8) No prompt  
END OF TEST

#### • Urine or Urine and Serum (Blade Application)

**NOTE:** Serum and urine samples may be run on the same gel on different rows by pipetting 20 µL urine and 17 µL diluted serum into the cups. Change Step "5) No prompt" to "5) To Continue, (continue)".

Place applicator blades into the slots that correspond to the urine sample. After the second urine application, the machine will beep and stop. Add an applicator blade into the remaining slot for serum samples. Close the chamber lid. Press **TEST SELECT/CONTINUE**, the machine will apply and continue.

## Electrophoresis Unit

- 1) No prompt  
Load Sample 1    00:25    21°C    SPD.=6
- 2) No prompt  
Apply Sample 1    00:25    21°C    SPD.=6
- 3) No prompt  
Load Sample 2    00:25    21°C    SPD.=6
- 4) No prompt  
Apply Sample 2    00:25    21°C    SPD.=6
- 5) No prompt  
Load Sample 3    00:25    21°C    SPD.=6
- 6) No prompt  
Apply Sample 3    00:25    21°C    SPD.=6
- 7) No prompt  
Absorb 1    2:00    21°C
- 8) No prompt  
Electrophoresis 1    \*\*6:30    21°C    650V
- 9) Remove gel blks, apply antisera (continue)  
Absorb 2    10:00    21°C
- 10) Remove excess antisera (continue)  
Blot 1    \*3:00    21°C
- 11) Remove template, install blot (continue)  
Blot 2    5:00    40°C
- 12) Remove blotter, (continue)  
Dry 1    8:00    50°C
- 13) No prompt  
END OF TEST

#### • Urine (Template Application) Electrophoresis Unit

- 1) Apply sample to template (continue)  
Absorb 1    5:00    21°C
- 2) Blot and remove template (continue)  
Electrophoresis 1    \*\*6:30    21°C    650V
- 3) Remove gel blks, apply antisera (continue)  
Absorb 2    10:00    21°C
- 4) Remove excess antisera (continue)  
Blot 1    \*3:00    21°C
- 5) Remove template, install blot (continue)  
Blot 2    5:00    40°C
- 6) Remove blotter, (continue)  
Dry 1    8:00    50°C
- 7) No prompt  
END OF TEST

#### • Serum or Urine (Both Application Methods) Stainer Unit

- 1) Plate Out, Holder In, Press (Continue)  
Wash 1    00:03    Cir=On    Valve=1
- 2) Plate In, Gel Holder In, Press (Continue)  
Wash 2    10:00    Cir=On    Valve=1
- 3) No prompt  
Stain 1    4:00    Cir=Off    Valve=5
- 4) No prompt  
Destain 1    1:00    Cir=On    Valve=2
- 5) No prompt  
Destain 2    1:00    Cir=On    Valve=2
- 6) No prompt  
Dry 1    8:00    63°C
- 7) No prompt  
Destain 3    1:00    Cir=On    Valve=2
- 8) No prompt  
Dry 2    5:00    63°C
- 9) No prompt  
END OF TEST

## B. SPIFE 3000

### • Serum (Blade Application)

#### Electrophoresis Unit

- 1) No prompt  
Load Sample 1 00:30 21°C SPD6
- 2) No prompt  
Apply sample 1 00:30 21°C SPD1 LOC1
- 3) No prompt  
Electrophoresis 1 \*\*6:30 21°C 650V 160 mA
- 4) Remove gel blks, apply antisera (continue)  
Absorb 1 10:00 21°C
- 5) Remove excess antisera (continue)  
Blot 1 \*3:00 21°C
- 6) Remove template, install blot (continue)  
Blot 2 5:00 40°C
- 7) Remove blotter, (continue)  
Dry 1 8:00 50°C
- 8) No prompt  
END OF TEST

### • Urine or Urine and Serum (Blade Application)

**NOTE:** Serum and urine samples may be run on the same gel on different rows by pipetting 20 µL urine and 17 µL diluted serum into the cups. Change Step “5) No prompt” to “5) To Continue, (continue)”. Place applicator blades into the slots that correspond to the urine sample. After the second urine application, the machine will beep and stop. Add an applicator blade into the remaining slot for serum samples. Press **TEST SELECT/CONTINUE**, the machine will apply and continue.

#### Electrophoresis Unit

- 1) No prompt  
Load Sample 1 00:25 21°C SPD6
- 2) No prompt  
Apply Sample 1 00:25 21°C SPD6 LOC1
- 3) No prompt  
Load Sample 2 00:25 21°C SPD6
- 4) No prompt  
Apply Sample 2 00:25 21°C SPD6 LOC1
- 5) No prompt  
Load Sample 3 00:25 21°C SPD6
- 6) No prompt  
Apply Sample 3 00:25 21°C SPD6 LOC1
- 7) No prompt  
Absorb 1 2:00 21°C
- 8) No prompt  
Electrophoresis 1 \*\*6:30 21°C 650V 160mA
- 9) Remove gel blks, apply antisera (continue)  
Absorb 2 10:00 21°C
- 10) Remove excess antisera (continue)  
Blot 1 \*3:00 21°C
- 11) Remove template, install blot (continue)  
Blot 2 5:00 40°C
- 12) Remove blotter, (continue)  
Dry 1 8:00 50°C
- 13) No prompt  
END OF TEST

### • Urine (Template Application)

#### Electrophoresis Unit

- 1) Apply sample to template (continue)  
Absorb 1 5:00 21°C
- 2) Blot and remove template (continue)  
Electrophoresis 1 \*\*6:30 21°C 650V 160mA

- 3) Remove gel blks, apply antisera (continue)  
Absorb 2 10:00 21°C
- 4) Remove excess antisera (continue)  
Blot 1 \*3:00 21°C
- 5) Remove template, install blot (continue)  
Blot 2 5:00 40°C
- 6) Remove blotter, (continue)  
Dry 1 8:00 50°C
- 7) No prompt  
END OF TEST

### • Serum or Urine (Both application methods)

#### Stainer Unit

- 1) Plate Out, Holder In, Press (Continue)  
Wash 1 00:03 REC=ON Valve=1
- 2) Plate In, Gel Holder In, Press (Continue)  
Wash 2 10:00 REC=ON Valve=1
- 3) No prompt  
Stain 1 4:00 REC=OFF Valve=5
- 4) No prompt  
Destain 1 1:00 REC=ON Valve=2
- 5) No prompt  
Destain 2 1:00 REC=ON Valve=2
- 6) No prompt  
Dry 1 8:00 63°C
- 7) No prompt  
Destain 3 1:00 REC=ON Valve=2
- 8) No prompt  
Dry 2 5:00 63°C
- 9) No prompt  
END OF TEST

## VI. Electrophoresis (SPIFE 2000/3000)

### A. Serum or Urine Blade Application

1. With the appropriate display, **SERUM IFE OR URINE IFE**, press the **START/STOP** button. An option to either begin the test or skip the operation will be presented. Press **START/STOP** to begin.
2. The SPIFE 2000/3000 will apply samples onto the gel and start electrophoresis, then beep when electrophoresis is complete.

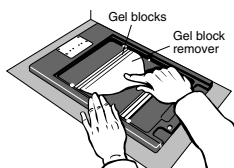
### B. Urine Template Application

1. With **URINE IFE** on the display, press the **START/STOP** button. An option to either begin the test or skip the operation will be presented. Press **START/STOP** to begin. Open the chamber lid.
2. Place 3 µL of each sample onto the slits in the template (one protein and five immunofixation) for each patient. Apply the samples as quickly as possible. (For IFE-3 gels, pipette the urine protein sample into the first slit in each template. Use the next five slits for the immunofix samples.)
3. Close the chamber lid, and press the **TEST SELECT/CONTINUE** button for the electrophoresis chamber. Sample application will be timed for 5 minutes.
4. After sample application is complete, open the chamber lid and gently blot the template with a Blotter A-Plus.
5. Carefully remove the blotter(s) and template(s) and discard as biohazardous waste.
6. Close the chamber lid, and press the **TEST SELECT/CONTINUE** button to start electrophoresis. SPIFE will beep when electrophoresis is complete.

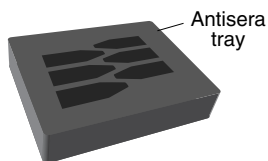
## VII. Immunofixation (SPIFE/SPIFE 2000/3000)

### Serum or Urine

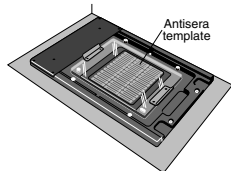
1. When electrophoresis is complete, open the chamber lid. Remove the carbon electrodes.
2. Using the Gel Block Remover, remove and discard both gel blocks.
3. Apply IFE Controls
  - a. Carefully blot the control wells with an Applicator Swab to remove excess buffer.
  - b. Apply 1  $\mu\text{L}$  of the control to the appropriate wells. The IgG Kappa control is applied to the "G" and "Kappa" wells. The IgA Lambda control is applied to the "A" and "Lambda" wells and the IgM control is applied to the "M" well only.
  - c. Close the chamber lid and allow the controls to absorb into the agarose for three minutes.



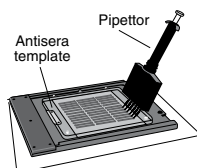
4. Pour the contents of the Fixative vial and each antisera vial into the appropriately labeled wells of the Antisera Tray. Cover the tray when not in use. Store tray and antisera at 2 to 8°C.



5. Open the chamber lid. Holding the template by the handles, gently place the Antisera Template onto the surface of the gel such that the round alignment hole is positioned on the pin to the left and the obround hole fits over the alignment pin on the right. No further pressure is needed.



6. Using a Pipettor, aspirate 50  $\mu\text{L}$  of Fixative and Antisera from the Antisera Tray. Dispense the fixative and antisera quickly into the oval slots at the right end of each antisera channel in the template.



7. Close the chamber lid and press the **TEST SELECT/CONTINUE** button to continue with antisera absorption. After the 10 minute absorption time, the SPIFE will beep.
8. When antisera absorption is complete, open the chamber lid. Place one Blotter Comb into the slots on the right end of the antisera channels such that the tips of the combs touch the gel. Close the chamber lid, and press the **TEST SELECT/CONTINUE** button. After the preliminary blot, the instrument will beep.
9. Remove the Blotter Combs and the Antisera Template. Place a SPIFE Blotter C on the surface of the gel. Layer a Blotter D on top of Blotter C. Place the Antisera Template on top of the Blotter D. Close the chamber lid and press the **TEST SELECT/CONTINUE** button. The final blot will be timed for 5 minutes.
10. When the beeper sounds, open the chamber lid, and remove the Antisera Template and the blotters. Lay one electrode across each end of the gel to prevent curling during the drying step. Close the chamber and press the **TEST SELECT/CONTINUE** button. The gel

will be predried in the electrophoresis chamber.

**NOTE:** Do not allow antisera to dry in the template. The Antisera Template should be cleaned with a mild biocidal detergent. The template may also be scrubbed with a soft brush to remove any antisera residue. Rinse with deionized water. Wipe completely dry.

11. After the gel has been predried, carefully remove the gel from the electrophoresis chamber.

## VIII. Washing, Staining, and Destaining (SPIFE/SPIFE 2000/3000)

### Serum or Urine

1. With **SERUM IFE** or **URINE IFE** on the display, press the **START/STOP** button. An option to either begin the test or skip the operation will be presented. Press **START/STOP** to begin.
2. Press the **TEST SELECT/CONTINUE** button. This will initiate the chamber prerinse cycle.
3. After the chamber has been rinsed, remove the Gel Holder from the stainer chamber. Attach the gel to the holder by placing the round hole on the gel mylar over the left pin on the holder and the obround hole over the right pin on the holder.
4. Place the Gel Holder with attached gel into the stainer chamber, with the front of the Gel Holder facing the operator. The gel should face away from the operator.
5. Press the **TEST SELECT/CONTINUE** button to begin the staining process. The instrument will wash, stain, destain, and dry the gel.
6. When the gel has completed the process, the instrument will beep. Remove the Gel Holder from the stainer to view the bands.

**Stability of the End Product:** The completed, stained and dried immunofixation gel is stable for an indefinite period of time.

**Quality Control:** The ImmunoFix Controls (Cat. No. 9400) are recommended for use as qualitative controls for verification of the appropriate reactivity of the antisera. The set contains three monoclonal proteins; IgG Kappa, IgA Lambda and IgM.

### INTERPRETATION OF RESULTS

The majority of monoclonal proteins migrate in the cathodic (gamma) region of the protein pattern. But, due to their abnormality, they may migrate anywhere within the globulin region on protein electrophoresis. The monoclonal protein band on the immunofixation pattern will occupy the same migration position and shape as the monoclonal band on the reference protein electrophoresis pattern. The abnormal protein is identified by the corresponding antiserum used.

When low concentrations of M-protein are present, the immunofixation band may appear on the stained background of the polyclonal immunoglobulin. A stained background may also appear when the M protein is present along with a large polyclonal increase.

For an in-depth discussion of IFE interpretation, call Helena Laboratories toll free and request the free publication "Immunofixation for the Identification of Monoclonal Gammopathies" Form R5.

### LIMITATIONS

1. Antigen excess will occur if there is not a slight antibody excess or antigen/antibody equivalency at the site of precipitation. Antigen excess in IFE is usually due to a very high level of immunoglobulin in the patient sample. The dissolution of immunoprecipitation is manifested by a loss of protein at the point of highest antigen concentration,

resulting in staining in the margins and leaving the central area with little demonstrable protein stain. In this case it may be necessary to adjust the protein content of the sample by dilution. Electrophoresing excessive amounts of antigen decreases resolution and requires higher concentrations of antibody. For optimum separation and sufficient intensity for visual detection, care must be taken in adjusting antibody content, sample concentration, time and voltage. The SPIFE ImmunoFix method has been optimally developed to minimize the antigen excess phenomenon.

2. Monoclonal proteins may occasionally adhere to the gel matrix, especially IgM. These bands will appear in all five antisera reaction areas of the gel. However, where the band reacts with the specific antisera for its heavy chain and light chain, there will be a marked increase in size and staining activity, allowing the band to be identified.

#### Further Testing Required:

Specimens containing a band on serum protein electrophoresis suggestive of a monoclonal protein, but which do not react with IgG, IgA or IgM antisera, may require further testing as follows:

1. Serum samples which have a precipitin band with Kappa or Lambda Light Chain Antisera but none corresponding with IgG, IgA or IgM antisera may have a free light chain or they may have an IgD or IgE monoclonal protein. Such sera should be tested with ImmunoFix IgD and IgE antisera.
2. A CRP band may be detected in patients with acute inflammatory response.<sup>7,8</sup> CRP appears as a narrow band on the most cathodic end of the high resolution agarose protein electrophoresis pattern. Elevated alpha<sub>1</sub> antitrypsin and haptoglobin (acute phase proteins) are supportive evidence for the presence of a CRP band. Patients with a CRP band will have a positive CRP by latex agglutination or an elevated quantitative CRP.

#### PERFORMANCE CHARACTERISTICS

Thirty-three serum specimens containing monoclonal and polyclonal proteins were tested using the SPIFE ImmunoFix acid violet and the SPIFE ImmunoFix acid blue procedures. Of the test results, 97% showed good agreement between the methods. The remaining samples differed slightly with the presence of multiclonal specimens. Eighteen urine specimens containing monoclonal and polyclonal proteins were tested using the SPIFE ImmunoFix acid violet and the SPIFE ImmunoFix acid blue procedures. Of the test results, 78% showed good agreement between methods. The remaining samples differed slightly with the presence of minute amounts of albumin in the serum protein lane and multiclonal specimens.

#### BIBLIOGRAPHY

1. Alfonso, E., Quantitation Immunoelectrophoresis of Serum Proteins, Clin Chem Acta, 10:114-122, 1964.
2. Alper, C.A. and Johnson, A.M., Immunofixation Electrophoresis: A Technique for the Study of Protein Polymorphism. Vo Sang 17:445-452, 1969.
3. Alper, C.A., Genetic Polymorphism of Complement Components as a Probe of Structure and Function. Progress in Immunology, First International Congress of Immunology. Edited by New York, Academic Press, 609-624, 1971.
4. Johnson, A.M. Genetic Typing of Alpha<sub>1</sub>(1)-Antitrypsin in Immunofixation Electrophoresis. Identification of Subtypes of P.M., J Lab Clin Med, 87:152-163, 1976.
5. Cawley, L.P. et al., Immunofixation Electrophoretic Technique Applied to Identification of Proteins in Serum and Cerebrospinal Fluid, Clin Chem, 22:1262-1268, 1976.

6. Ritchie, R.F. and Smith, R., Immunofixation III, Application to the Study of Monoclonal Proteins, Clin Chem, 22:1982-1985, 1976.
7. Jeppsson, J.E., et al., Agarose Gel Electrophoresis, Clin Chem, 25(4):629-638, 1979.
8. Killingsworth, L.M., et al., Protein Analysis, Diagnostic Medicine, 3-15, Jan/Feb., 1980.

#### SPIFE ImmunoFix System

SPIFE ImmunoFix Kits	Cat. No. 3401, 3406, 3409
SPIFE IFE Gels (10)	Fixative 1 vial
Acid Violet Stain (1 vial)	IgG 1 vial
Tris-Buffered Saline (1 pkg)	IgA 1 vial
Citric Acid Destain (1 pkg)	IgM 1 vial
Applicator Blade Assembly (30)	Kappa 1 vial
SPIFE Blotter C (20)	Lambda 1 vial
SPIFE Blotter D (10)	
Blotter Combs (30)	
Applicator Swabs (10)	

SPIFE ImmunoFix Kits	Cat. No. 3401T, 3406T, 3409T
SPIFE IFE Gels (10)	Fixative 1 vial
Acid Violet Stain (1 vial)	IgG 1 vial
Tris-Buffered Saline (1 pkg)	IgA 1 vial
Citric Acid Destain (1 pkg)	IgM 1 vial
SPIFE Urine IFE Templates (30)	Kappa 1 vial
Blotter A-Plus (30)	Lambda 1 vial
SPIFE Blotter C (20)	
SPIFE Blotter D (10)	
Blotter Combs (30)	
Applicator Swabs (10)	

#### Other Supplies and Equipment

The following items, needed for performance of the SPIFE IFE procedure, must be ordered individually.

	Cat. No.
SPIFE Analyzer	1109
SPIFE 2000 Analyzer	1130
SPIFE 3000 Analyzer	1088
IFE Controls	9400
REP Prep	3100
REP Auto Applicator	3710
SPIFE IFE 3/6 Disposable Cups	3368
SPIFE IFE 9/15 Disposable Cups	3363
SPIFE Disposable Cup Tray for IFE 3/6	3376
SPIFE Disposable Cup Tray for IFE 9	3367
SPIFE 2000/3000 Disposable Cup Tray for IFE 3/6	3377
SPIFE 2000/3000 Disposable Cup Tray for IFE 9	3378
Gel Block Remover	1115
SPIFE IFE Pipettor	1122
Pipettor Tips for IFE Pipettor	3355
Tip Spacers for SPIFE IFE Pipettor	3356
Pipettor Tips for IFE 3/6 Multi-Channel Pipettor	3402
Pipettor Tips for IFE 9 Multi-Channel Pipettor	3397
Tip Spacers for SPIFE 3/6 Multi-Channel Pipettor	3349
Tip Spacers for SPIFE 9 Multi-Channel Pipettor	3396
SPIFE IFE-6 Antisera Template	3410
SPIFE IFE-3 Antisera Template	3395
SPIFE IFE-9 Antisera Template	3392
SPIFE IFE 3/6 Antisera Tray	1119
SPIFE IFE 9 Antisera Tray	3394
SPIFE Urine IFE Alignment Guide	3380

For Sales, Technical and Order Information and Service Assistance, call 800-231-5663 toll free.

Helena Laboratories warrants its products to meet our published specifications and to be free from defects in materials and workmanship. Helena's liability under this contract or otherwise shall be limited to replacement or refund of any amount not to exceed the purchase price attributable to the goods as to which such claim is made. These alternatives shall be buyer's exclusive remedies.

In no case will Helena Laboratories be liable for consequential damages even if Helena has been advised as to the possibility of such damages.

The foregoing warranties are in lieu of all warranties expressed or implied including, but not limited to, the implied warranties of merchantability and fitness for a particular purpose.

*Helena Laboratories*

**Working for you**

Beaumont, TX U.S.A.

Shaded areas indicate that the text has been modified, added or deleted.

Test System Code: 25288

Analyte Code: 2802

Complexity: High

Pro. 199  
8/08(2)